

APL64 2024.0.9 Update

Table of Contents

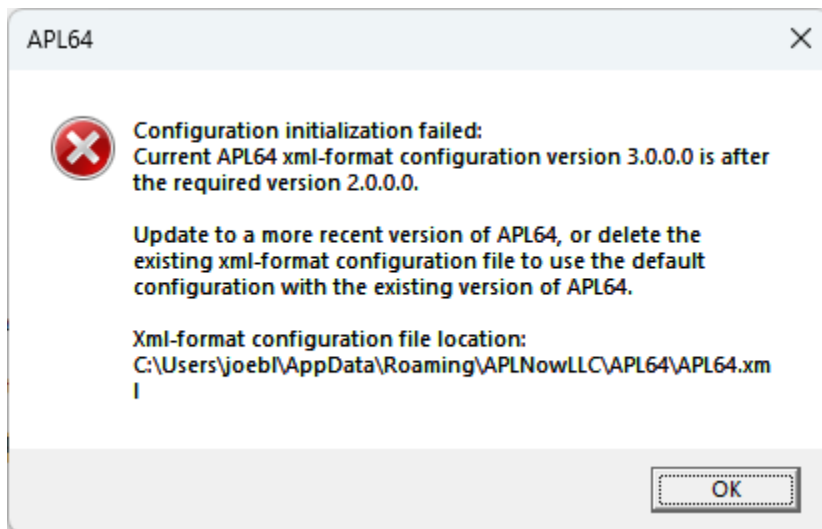
Overview	2
Interpreter Modifications	3
New)PROFILE system command and <input type="checkbox"/> PROFILE system function	3
Enhanced Grade Up (Δ) and Grade Down (Ψ) primitive functions now support Unicode character and string arrays.	3
APL64 Developer Version GUI Modifications	3
Fetching an APL64 variable and inserting the object into a rectangular selection in a function or variable editor is now supported.	3
Alt+NumCodes Support in APL64	3
Miscellaneous	4
<input type="checkbox"/> USERPATH: Removed reference to WebView2 browser cache files in System Functions manual	4
<input type="checkbox"/> ACBD, <input type="checkbox"/> CPCINFO, <input type="checkbox"/> CRLF, <input type="checkbox"/> EXEPATH, <input type="checkbox"/> NOVALUE, <input type="checkbox"/> SYSCONFIGFILE and <input type="checkbox"/> XSO descriptions moved to System Function manual	4
Help APL+Win Compatibility Draw Control Reference menu opens APL2000 Draw manual	4
Bug Fixes	4
The user=n command line argument value was improperly saved in the APL64 XML-format configuration file.	4
The APL2000 Draw ActiveX Control was not installed with the APL64 update	5
A new line delimiter (↵) was incorrectly present when copying text from APL64 to the Windows Clipboard instead of a paragraph delimiter (¶).	5
Niladic system functions were incorrectly reported as system variables in a value tip.	5

Overview

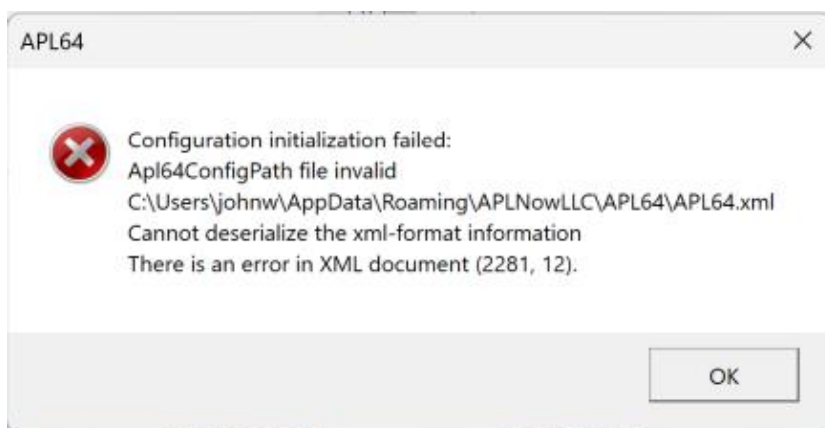
This document describes the enhancements and bug fixes that are present in the APL64 2024.0.9 Update.

IMPORTANT: APL64 programmers can help to improve the performance of their applications by using the new ☐PROFILE system function included in this update and sending 'profile' information to the APL64 development team.

IMPORTANT: Installation of this APL64 2024.0.9 update is recommended in preparation for a future update that will enhance the function editor to optionally retain programmer edits between APL64 'sessions' and provide a 'comparison' function editor format. After applying this APL64 2024.0.9 update, the check of the APL64 XML-format configuration file version is improved. If the version of the configuration file is not appropriate, an improved message will be displayed:



The improved message will replace a message which does not identify the inappropriate configuration file version:



Interpreter Modifications

New `)PROFILE` system command and `□PROFILE` system function

Using the 'profile' tools an APL64 programmer can obtain detailed information about interpreter actions and processing times for all or part of an APL64-based application system. Providing such application-specific profiles to the APL64 development team, can help to identify potential APL64 performance improvements.

Enhanced Grade Up (`⤴`) and Grade Down (`⤵`) primitive functions now support Unicode character and string arrays.

APL64 Developer Version GUI Modifications

Fetching an APL64 variable and inserting the object into a rectangular selection in a function or variable editor is now supported.

Alt+NumCodes Support in APL64

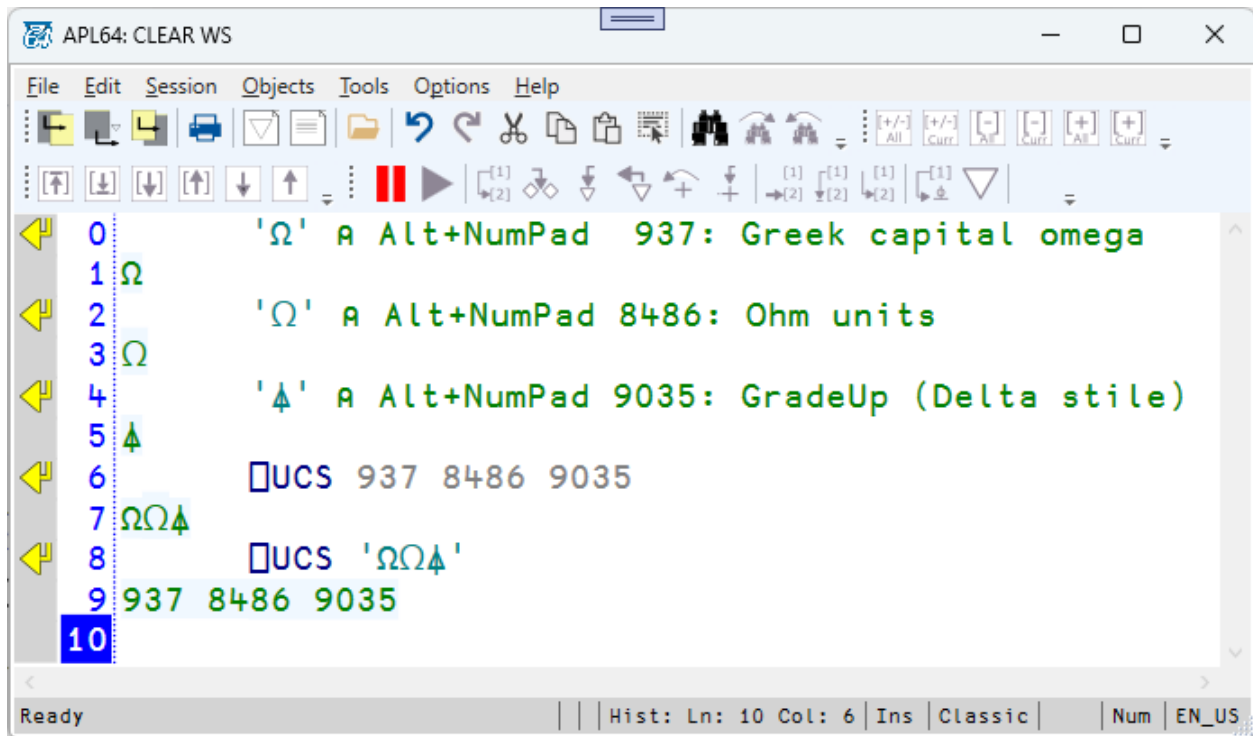
The APL64 history formats, function editor and variable editor support the entry of ALT+#### codes to render Unicode characters which are not directly accessible by the keyboard. **Note:** The virtual On-Screen Keyboard is not supported.

To use this feature:

- (a) Place the keyboard focus on the desired APL64 pane
- (b) Depress and hold the Alt keyboard key
- (c) Use the numeric keypad to enter digits
- (d) Release the Alt key

The programmer-entered digits are interpreted by APL64 as the decimal Unicode code point for the desired glyph.

For example:



For more information about Unicode code points, see here: <https://www.codetable.net/>

Miscellaneous

□USERPATH: Removed reference to WebView2 browser cache files in System Functions manual

□ACBD, □CPCINFO, □CRLF, □EXEPATH, □NOVALUE, □SYSCONFIGFILE and □XSO descriptions moved to System Function manual

[Help](#) | [APL+Win Compatibility](#) | [Draw Control Reference](#) menu opens APL2000 Draw manual

Bug Fixes

The `user=n` command line argument value was improperly saved in the APL64 XML-format configuration file

The APL2000 Draw ActiveX Control was not installed with the APL64 update

A new line delimiter (↵) was incorrectly present when copying text from APL64 to the Windows Clipboard instead of a paragraph delimiter (¶).

Niladic system functions were incorrectly reported as system variables in a value tip.