

APL64 Update 2024.0.2

Table of Contents

Overview	4
Interpreter Modifications	4
<input type="checkbox"/> wi improvements	4
APL64 Colossal file functions were ported to APL64 from APLNow32.....	4
<input type="checkbox"/> tt32 System Function: High-Resolution Timer Tick Count for APLNow32 operations.....	4
<input type="checkbox"/> ZIP system function.....	4
System variable <input type="checkbox"/> SYS[21] value is 1 when the APL64 is runtime.....	4
)RSAVE system command now reports DEPRECATED FEATURE.....	4
<input type="checkbox"/> ROWFIND performance improved when the left and right arguments are in <input type="checkbox"/> AV.....	4
<input type="checkbox"/> SKD: ToFile/FromFile actions removed.....	4
<input type="checkbox"/> STRING updated.....	5
<input type="checkbox"/> WA operates faster	5
<input type="checkbox"/> ARBOUT and <input type="checkbox"/> PR system variables now report DEPRECATED FEATURE	5
<input type="checkbox"/> nfe 'delete' action exception message improved	5
APL64 Developer Version GUI Modifications	5
Option to Hide APL Command Line	6
Option to suppress callback information in the history pane	7
Cancel option for Quad-input, Quote-quad input, and <input type="checkbox"/> ASKxx dialogs	7
Bookmarks are supported in the Editable Classic History Format.....	8
The editable classic History supports the Session Use Selected Text on Enter in History menu.....	8
'Find Next Bookmark' keyboard shortcut modified to Alt+F2 from F2.....	8
Line number display in the history pane and object editors have been enhanced.....	9
Find next/previous executed line options now supported in editable Classic History format.....	10
Executed Statements History (Ctrl+F9) window updated	10
Find tool and search keyboard shortcuts for Token and Word searches improved	10
Objects Row Numbers menus improved	11
Objects Tool Bars menus improved	11
Update to Fetch Object tool to support large matrices.....	11
New Session Suppress Unassigned History Output From Quote-Quad Output menu	12
New Session Classic History Format Refresh For Accurate History menu	12

<input type="checkbox"/> CSE documentation consolidated	12
WRE and CPC.....	13
Digital code signing available for an APL64 Windows Runtime Exe	13
Materialize additional files, if any, to the path where the WRE exe or CPC Nuget package is installed, rather than the path where the WRE or CPC dll is running	13
Materialize the APLNow32 ini and adf files, if included in the WRE, to the path where the WRE dll is running.....	13
The 'Add Folder of Required Files' button to add files in a folder and all sub-folders in the Additional Files Required for the Application area	13
The 'Remove All Required Files' button to remove all files listed in the Additional Files Required for the Application area.....	14
<input type="checkbox"/> CPC documentation consolidated.....	14
Miscellaneous	15
SCAN function updated.....	15
Bug Fixes	15
<input type="checkbox"/> EVAL '2147490000' incorrectly returned the value ~2147483648	15
Function Editor: Wrong error message: Cannot save function definition {aplFnInfo.FnName}	15
Outlining glyphs in the margins sometimes didn't appear in a function editor	15
<input type="checkbox"/> LIBD did not create library definition for network sources	15
Options Libraries... menu: Configuration initialization failed: Cannot serialize to XML	16
<input type="checkbox"/> LIBD LIBRARY NUMBER ERROR when library definition was not left justified	16
Case was retained for <input type="checkbox"/> libs and)libs for mixed-case library definition.....	16
Extra space between library number and workspace name: WS NOT FOUND	16
Ctrl+A then Ctrl+X in non-editable Classic Session History return an error	17
Accessing help file with no Internet connection: Configuration initialization failure exception.....	17
WRE (Windows Runtime Executable) failed to load APLNow.X64.dll in APL64 runtime system	17
WRE Publish output log file contained messages referencing SpreadsheetGear	17
WRE crashed APL64 when creating a WRE without a valid entry in Runtime Workspace Filename	18
Empty array assigning caused INDEX ERROR	18
Save a function (Ctrl+S) with auto indented spaces exception	18
Function editor exception with :IF and :ANDIF or :ORIF control structures.....	18
0 <input type="checkbox"/> inbuf 'Default Value' ◊ X← <input type="checkbox"/> deadlocked APL64.....	18
Starting the Find in Functions in Workspace utility closed the APL64 instance	18
The APLGrid with xGripOptions=256 showed the dropdown list turn to black	18

Stepping in the debugger a line at a time (F10) didn't show the current line 18

Quote-quad input didn't complete its action when an empty response was user-entered 18

EDSS description incorrectly specified in the APL64 system functions documentation 18

The current)output state wasn't reset to ON after the)clear command 18

The current)output state wasn't saved in the workspace 18

Fetch Object operation in a function editor was not successful for a large numeric matrix 19

Debugger Pause toolbar did not suspend a function and activate the debugger 19

wi HELPSTRINGS.txt documentation was not included in APL64 production release 19

Overview

This document describes the enhancements and bug fixes that are planned for the next production release of APL64.

Interpreter Modifications

[wi improvements](#)

[wi](#) system in APL64 was redesigned for better performance and a more responsive Windows-targeted application GUI.

[APL64 Colossal file functions were ported to APL64 from APLNow32](#)

Added support for case sensitive file systems in cross-platform-targeted applications.

[tt32 System Function: High-Resolution Timer Tick Count for APLNow32 operations](#)

Purpose: Returns the number of ticks for all APLNow32 operations ([wi](#) and [wcall](#)) since the start of the APL64 session to the time the value of [tt32](#) was obtained.

Refer to the topic [tt32](#) in the **Help | APL Language | APL64 System Functions** in APL64 for the details.

[ZIP system function](#)

The [ZIP](#) APL64 system function is an interface to the cross-platform compatible [.Net System.IO.Compression](#) tools. The [ZIP](#) system function actions involve zip-format files. Since file operations are involved, the user's workstation credentials must be appropriate for the actions to be performed by [ZIP](#).

Refer to the topic [zip](#) in **Help | APL Language | Using ZIP** in APL64 for the details.

[System variable SYS\[21\] value is 1 when the APL64 is runtime](#)

When APL64 is running as a WRE (Windows runtime executable) or a CPC (Cross platform), the value of [SYS\[21\]](#) is 1.

[\)RSAVE system command now reports DEPRECATED FEATURE](#)

)RSAVE system command is deprecated in APL64. This message is more descriptive than INCORRECT COMMAND. Use the **Options | Create .Net Runtime Assembly | Create Windows Runtime Executable** utility instead.

[ROWFIND performance improved when the left and right arguments are in AV](#)

[SKD: ToFile/FromFile actions removed](#)

Microsoft has deprecated these actions, so they're no longer supported in [SKD](#). Use the FromFileXml and ToFileXML [SKD](#) actions instead. Before updating APL64, use the [SKD](#) 'FromFile' action followed by the [SKD](#) 'ToFileXml' action to convert any stored [SKD](#) dictionaries to the XML format.

STRING updated

- String '?' documentation summary corrected
- A String action which accepts a String left argument will also accept a rank 0 or 1 character value left argument, which is converted to a String.
- A String action which accepts a String[] vector left argument will also accept a vector left argument with elements which can be a string scalar or rank 0 or 1, character values which are converted to String.

WA operates faster

The enhancement speeds up the performance of wa to estimate available workspace memory.

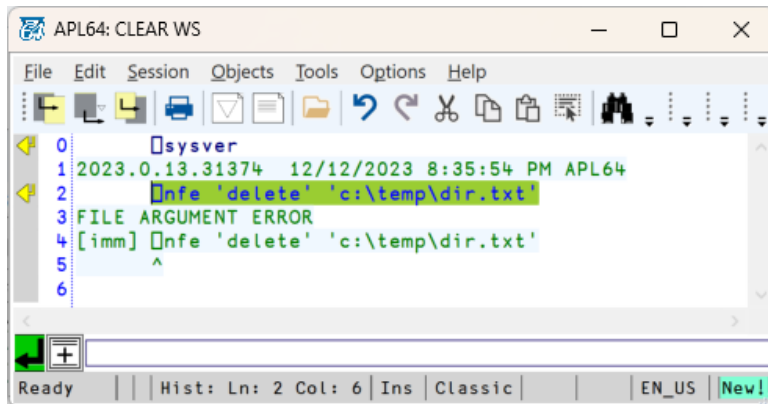
Enhanced wa to avoid doing garbage collection (workspace compaction) to estimate available workspace memory

ARABOUT and PR system variables now report DEPRECATED FEATURE

arabout and pr are legacy system variables are deprecated in APL64. In APL64 the result of Quote-Quad query or input never includes the programmer-defined prompt text.


nfe 'delete' action exception message improved

Behavior in the prior version:



```
0  sysver
1  2023.0.13.31374 12/12/2023 8:35:54 PM APL64
2  nfe 'delete' 'c:\temp\dir.txt'
3  FILE ARGUMENT ERROR
4  [imm] nfe 'delete' 'c:\temp\dir.txt'
5  ^
6
```

New behavior in this version:

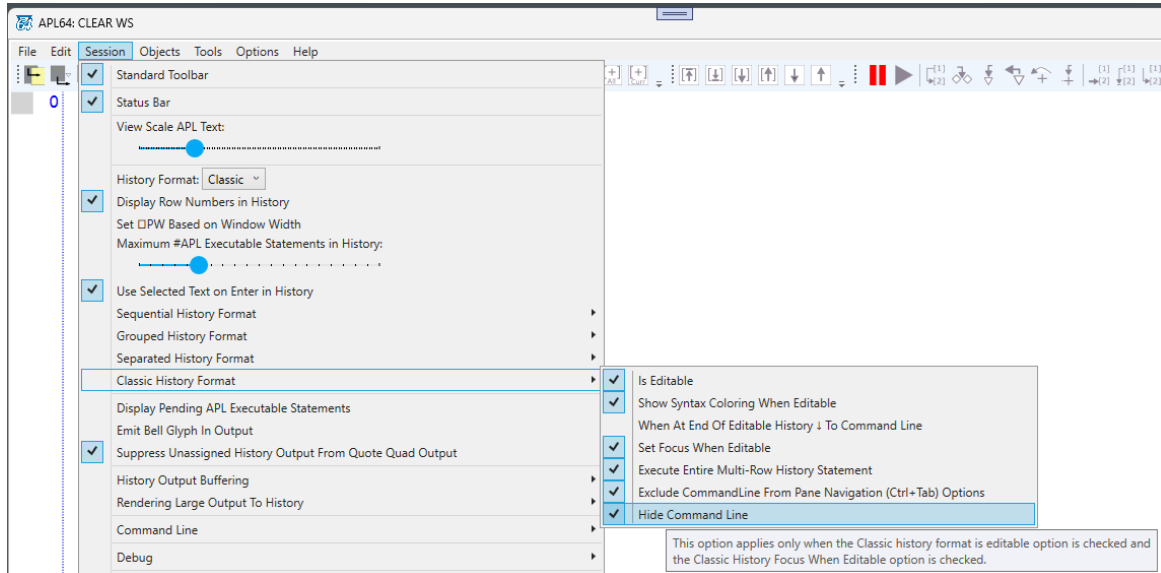


```
0  sysver
1  2023.0.14.14389 5/30/2024 1:18:28 AM APL64
2  nfe 'delete' 'c:\temp\dir.txt'
3  FILE ARGUMENT ERROR: [NFE]: The process cannot access the file 'c:\temp\dir.txt' because it is being used by another process.
4  [imm] nfe 'delete' 'c:\temp\dir.txt'
5  ^
6
```

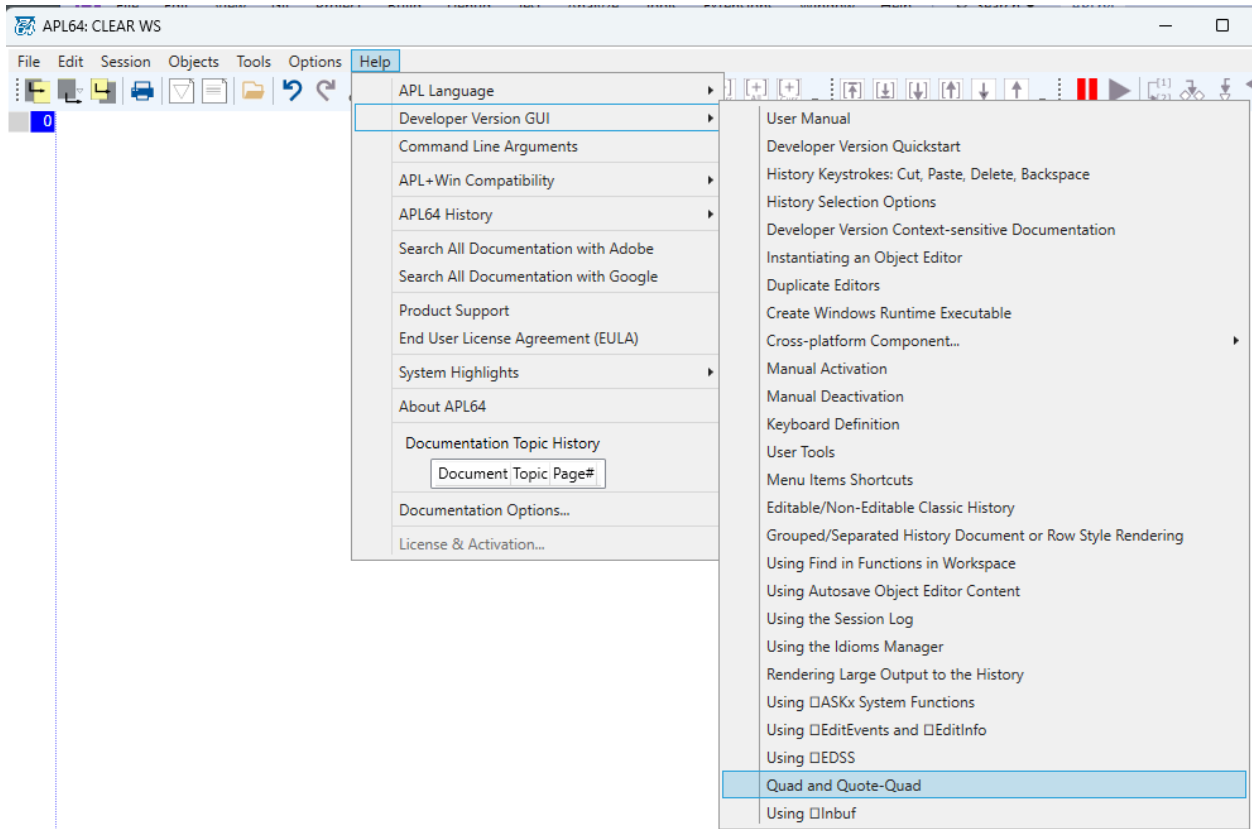
APL64 Developer Version GUI Modifications

Option to Hide APL Command Line

Initial versions of the APL64 developer version Quad and Quote-Quad input were dependent on the Command Line in the APL64 Developer version. This dependency has been eliminated, so that the APL64 programmer may hide the Command Line (only when the editable Classic history format is used) by enabling the menu item **Session | Classic History Format | Hide Command Line**.



Providing an option to suppress the command line required modifications to the behavior of quad and quote-quad in APL64. Review the **Help | Developer Version GUI | Quad and Quote-Quad** programmer documentation for important information and examples.



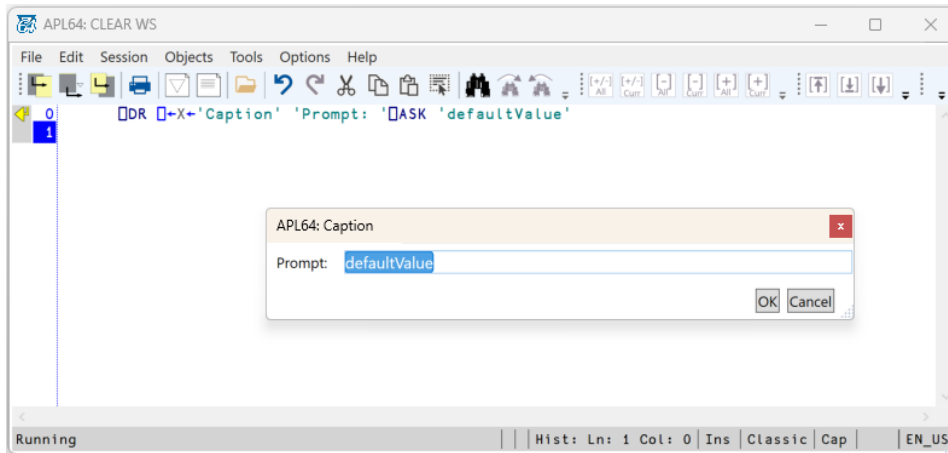
Option to suppress callback information in the history pane

Use the APL64 system command 'output nocallback' to suppress callback information in the APL64 developer version history pane. In APL64 callbacks generate information with an **>[object;event]** prefix on the executable statement which caused the callback. Displaying this cause-and-effect information maintains an accurate history of what occurred in an APL64 instance. Callbacks include execution of a user-entered APL executable statement, interpreter callbacks, invocation of a user-defined tool and wi events.

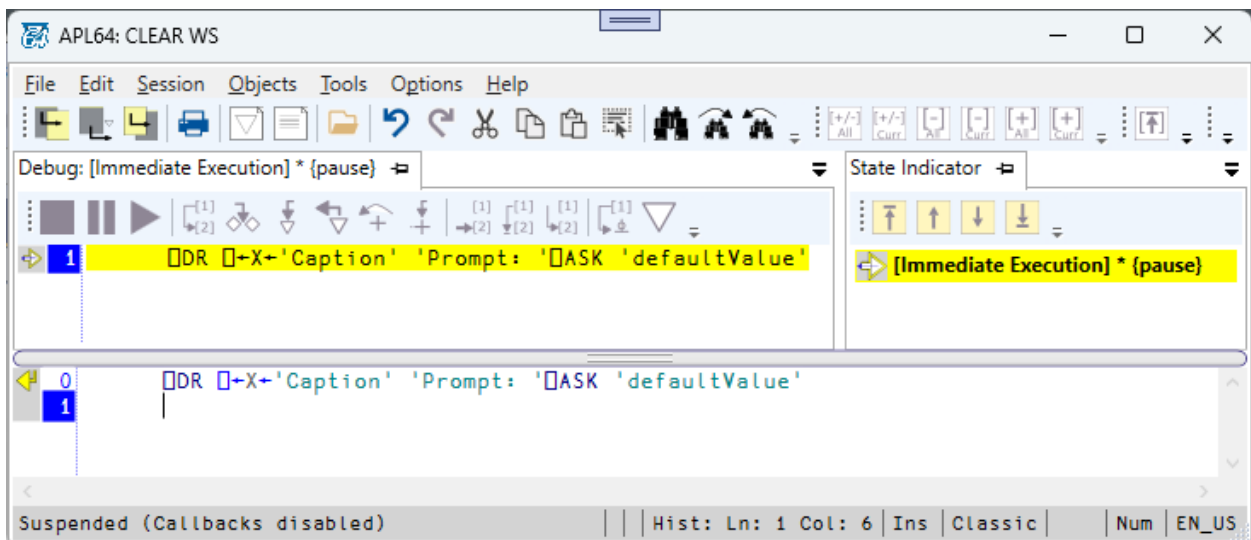
Cancel option for Quad-input, Quote-quad input, and ASKxx dialogs

```
DR ←X←'Caption' 'Prompt: 'ASK 'defaultValue'
```

Before the user closes the dialog:



After the user closes the dialog using the Cancel button:



Bookmarks are supported in the Editable Classic History Format

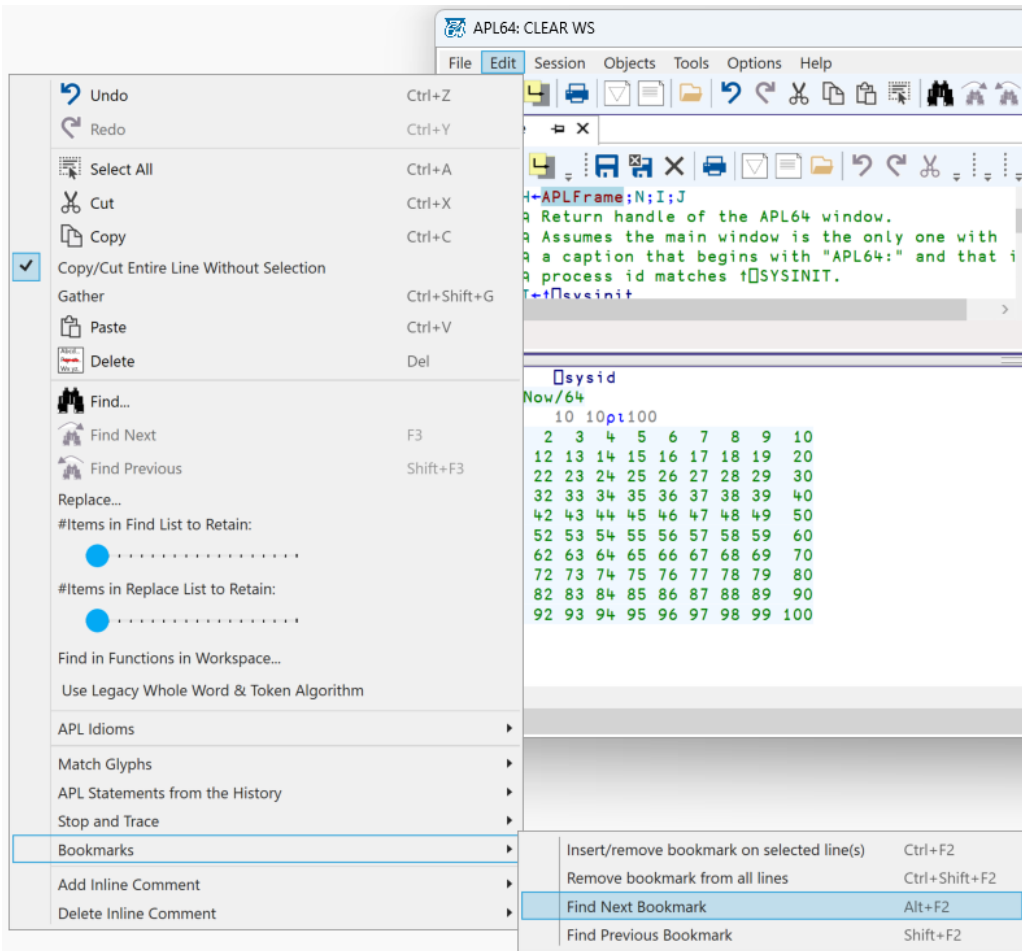
This feature is available when enabling the menu item **Session | Classic History Format | Show Syntax Coloring When Editable**.

The editable classic History supports the **Session | Use Selected Text on Enter in History** menu

This setting controls the behavior for selected and unselected text in the editable classic history when Enter or Return is pressed.

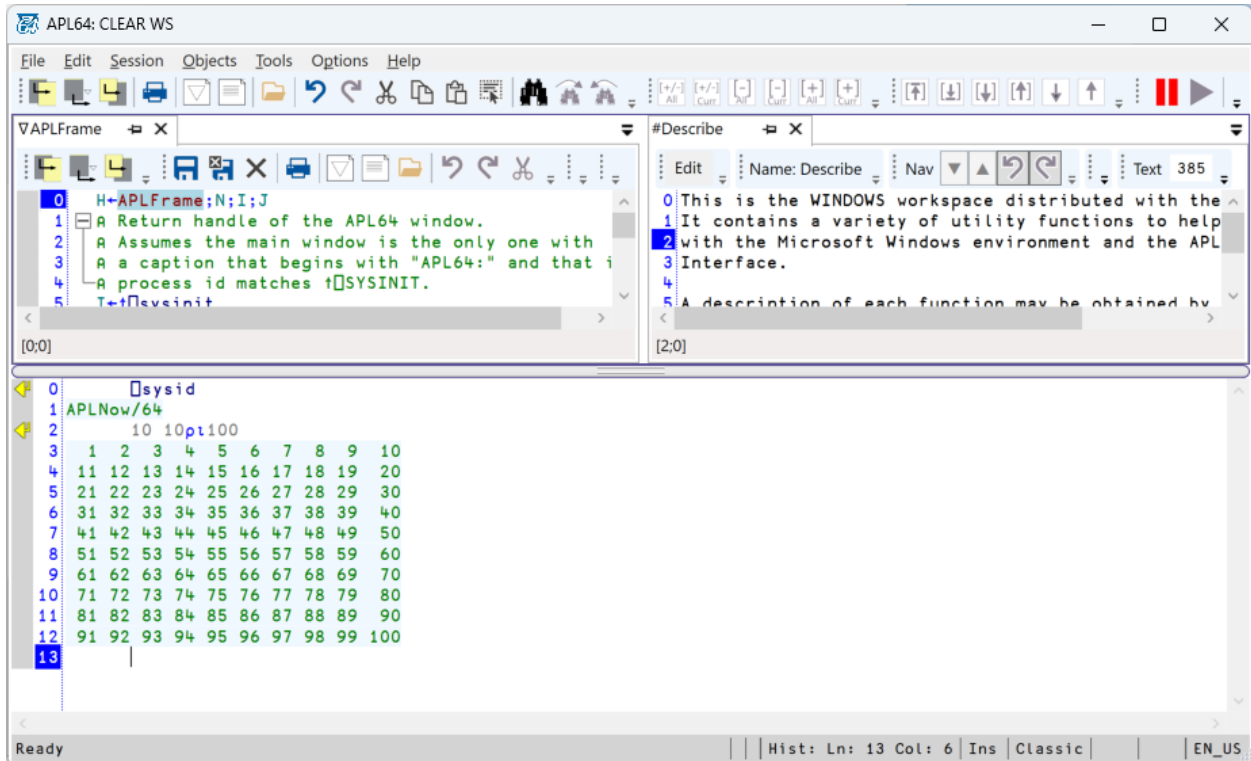
'Find Next Bookmark' keyboard shortcut modified to Alt+F2 from F2

The purpose of this change was to support the keyboard shortcut in the Sequential history format.



Line number display in the history pane and object editors have been enhanced

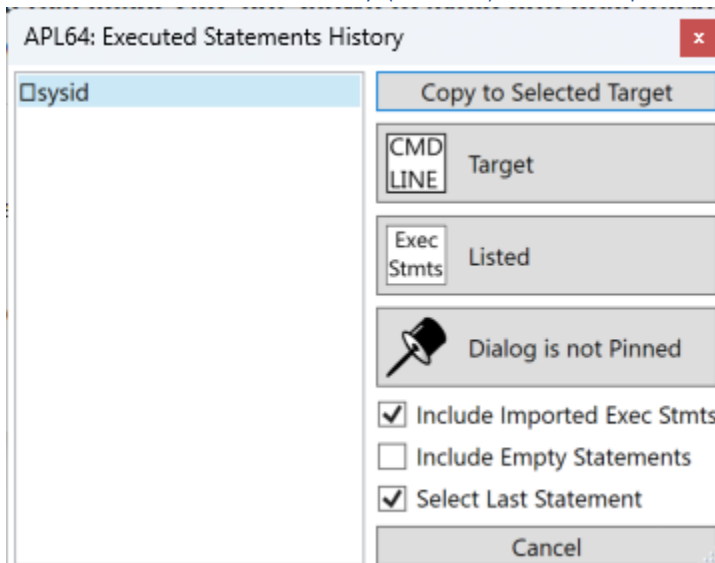
The user-selected foreground and background colors for line numbers are reversed for the line containing the cursor to provide a visual cue indicating the position of the cursor.



Find next/previous executed line options now supported in editable Classic History format

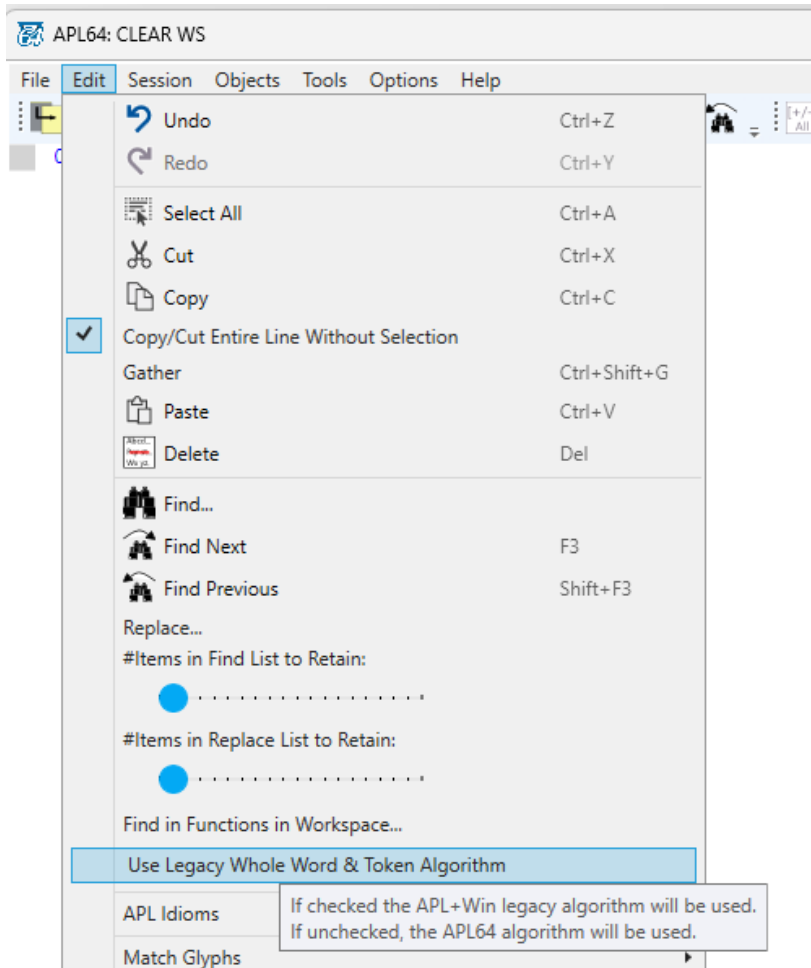
The Find next and previous executed line menu options and their corresponding keyboard shortcuts, Alt+F9 and Shift+Alt+F9, respectively, are now supported when the Classic History format is editable.

Executed Statements History (Ctrl+F9) window updated



Find tool and search keyboard shortcuts for Token and Word searches improved

For better APL+Win compatibility the menu item **Edit | Use Legacy Word & Token Algorithm** is enabled by default in APL64. This option applies to the Find tool, Ctrl+F3 and Ctrl+Shift+F3 keyboard shortcuts with and without a selection. Uncheck this menu item to use the APL64 algorithm.



Objects | Row Numbers menus improved

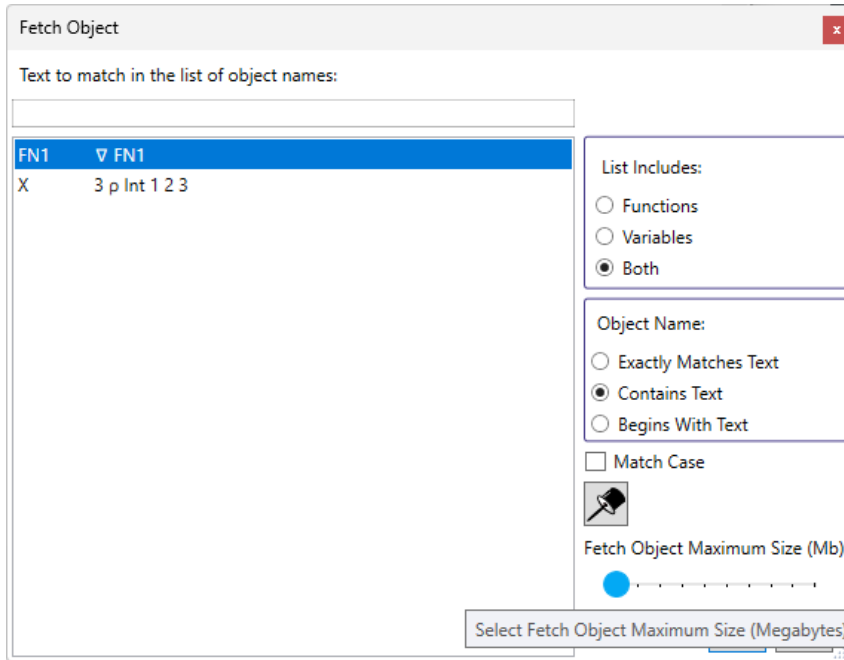
The **Objects | Row Numbers | Display Row Numbers in Function Editor** and **Objects | Row Numbers | Display Row Numbers in Function Editor** submenus were moved into their respective **Objects | Variable Editor** and **Objects | Function Editor** menus since the row numbers are optional features in the variable and function editors.

Objects | Tool Bars menus improved

The **Objects | Tool Bars** submenus were moved to the **Objects | Function Editor** and **Objects | Variable Editor** menus.

Update to Fetch Object tool to support large matrices

The new **Fetch Object Maximum Size** option may be used to specify the maximum size of an object that can be fetched. The default value is 100Mb.



New Session | Suppress Unassigned History Output From Quote-Quad Output menu

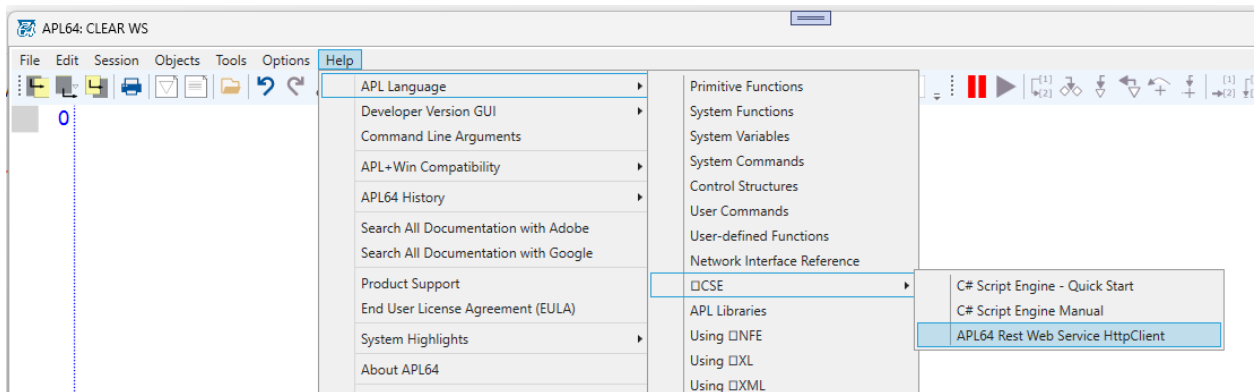
This option specifies when to display the quote-quad output value in the history pane when assignment is used. Quote-quad output can always be assigned. The APL+Win behavior (unchecked) is that even if quote-quad output is assigned, the quote-quad output value is rendered to the history. For some uses of quad input, the suppression (checked) behavior is appropriate.

New Session | Classic History Format | Refresh For Accurate History menu

This menu option will refresh the editable classic history pane by removing any programmer scratch-pad text that has not been executed by the interpreter.

☐ CSE documentation consolidated

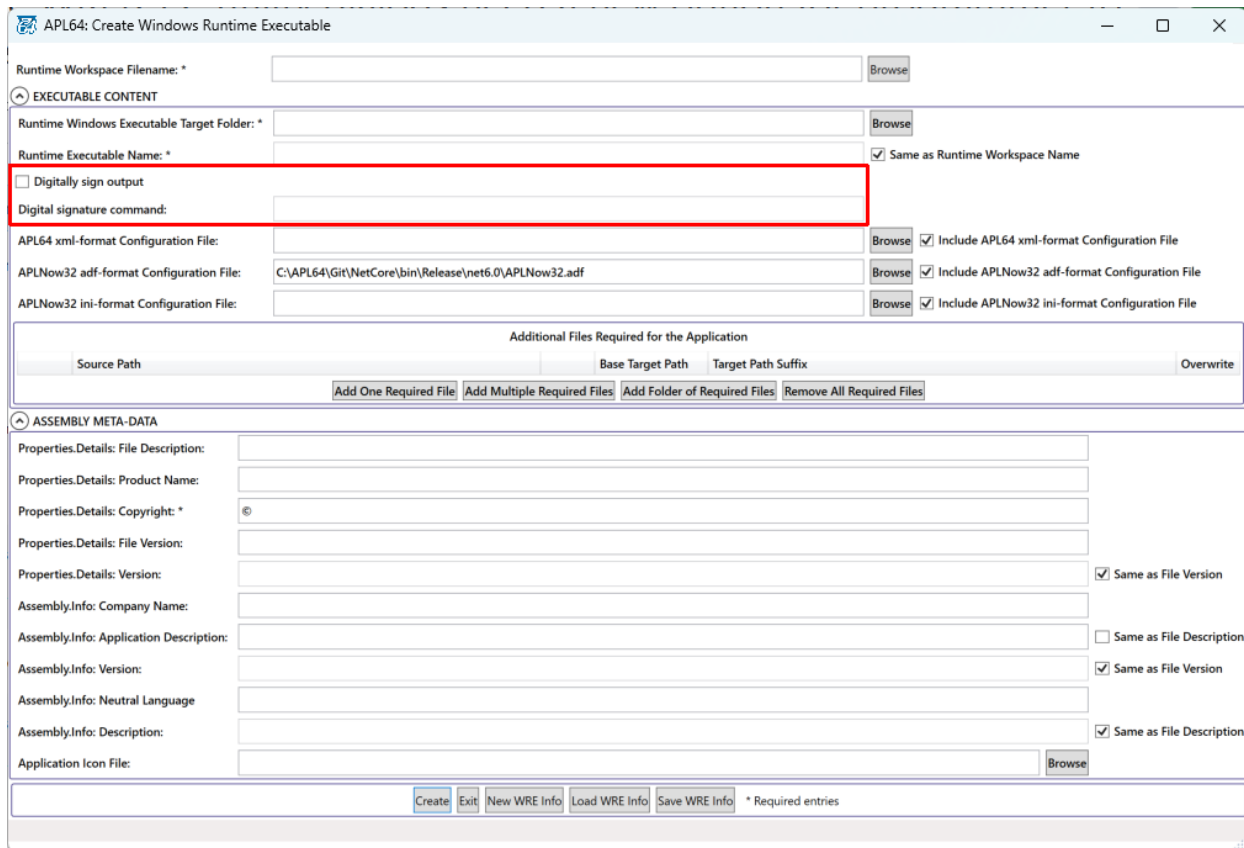
The menu item **Help | APL Language | ☐ CSE** now contains all ☐ CSE programmer documentation. The new **APL64 Rest Web Service HTTPClient** topic illustrates how to use the ☐ CSE system function to access a REST web service from APL64 ☐ CSE and use .Net assemblies which are published in a Nuget package.



WRE and CPC

Digital code signing available for an APL64 Windows Runtime Exe

An option is provided to digitally sign an APL64 WRE (Windows runtime executable) using an APL64 programmer-provided digital signature certificate. An application should be digitally signed to indicate that the application as delivered to the end user came from the application publisher (e.g. APL programmer). Use the optional digital signature section of the Create Windows Runtime Executable dialog for this purpose. Refer to the document in **Help | Developer Version Gui | Create Windows Runtime Executable** for the details.



Materialize additional files, if any, to the path where the WRE exe or CPC Nuget package is installed, rather than the path where the WRE or CPC dll is running

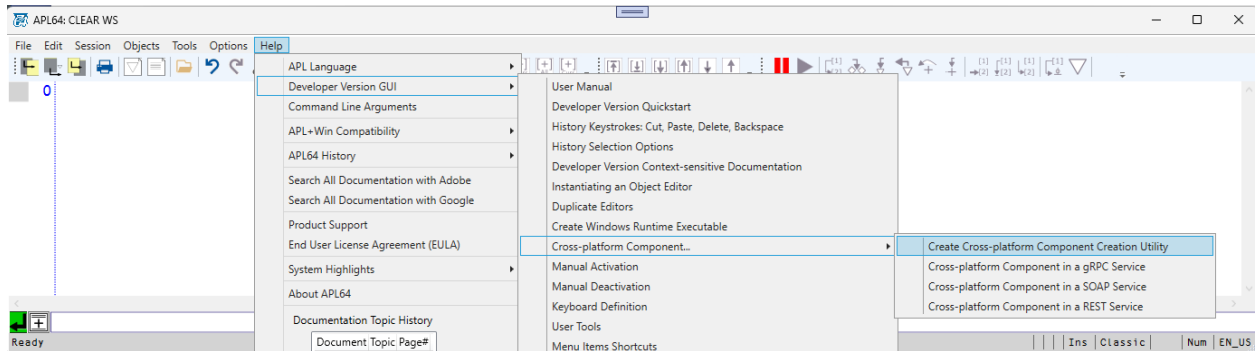
Materialize the APLNow32 ini and adf files, if included in the WRE, to the path where the WRE dll is running

The 'Add Folder of Required Files' button to add files in a folder and all sub-folders in the Additional Files Required for the Application area

The 'Remove All Required Files' button to remove all files listed in the Additional Files Required for the Application area

☐ CPC documentation consolidated

The menu item **Help | Developer Version GUI | Cross-Platform Component** contains all ☐ CPC programmer documentation. Examples are provided for using an APL64 cross-platform component in a gRPC Service, SOAP Service and REST Service.



Miscellaneous

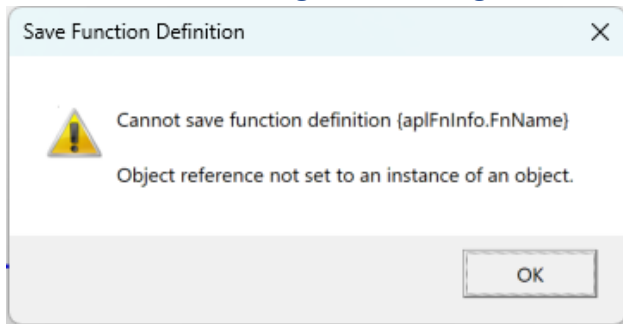
SCAN function updated

If your workspace contains the SCAN function from past versions of APL64 or APL+Win, you will need to update it with the updated version in the TOOLS\UTILITY.ws64 workspace prior to using it in this version of APL64.

Bug Fixes

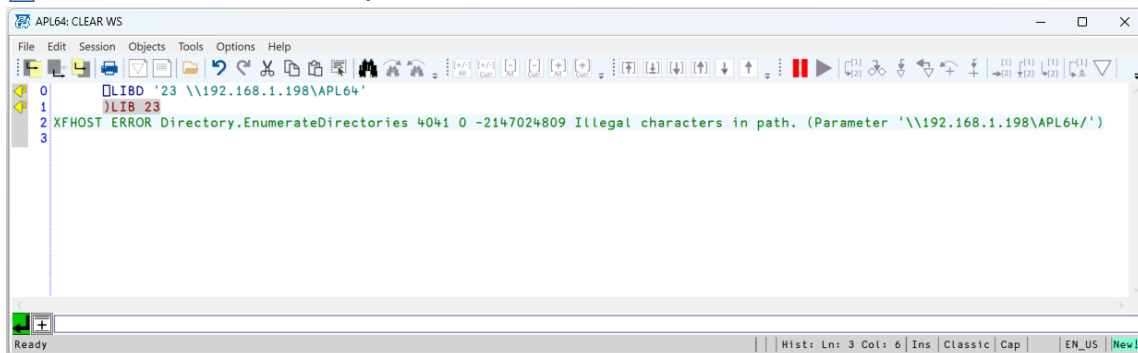
EVAL '2147490000' incorrectly returned the value `~2147483648`

Function Editor: Wrong error message: Cannot save function definition {aplFnInfo.FnName}

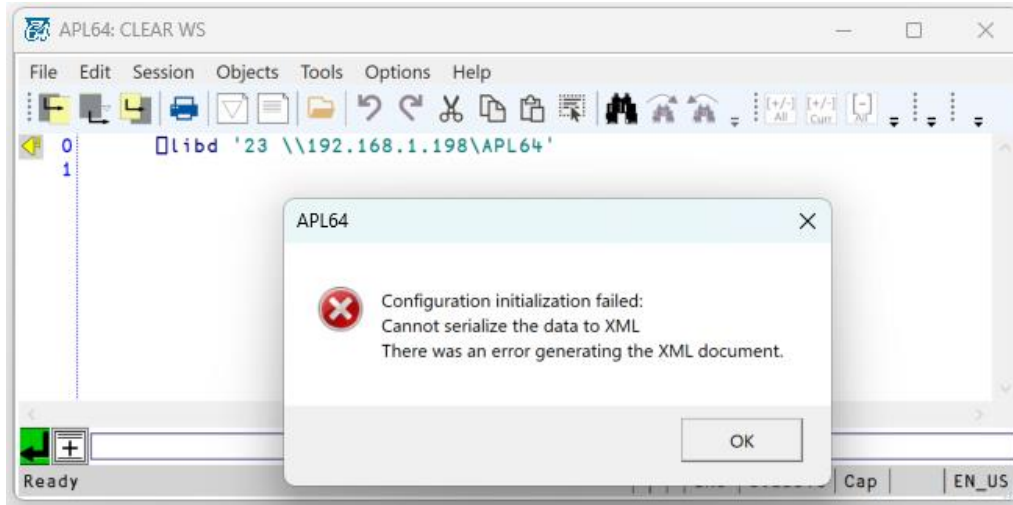


Outlining glyphs in the margins sometimes didn't appear in a function editor

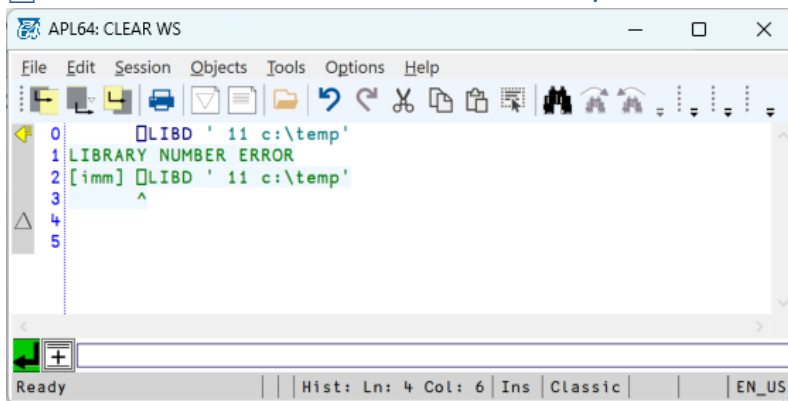
LIBD did not create library definition for network sources



Options | Libraries... menu: Configuration initialization failed: Cannot serialize to XML



LIBD LIBRARY NUMBER ERROR when library definition was not left justified



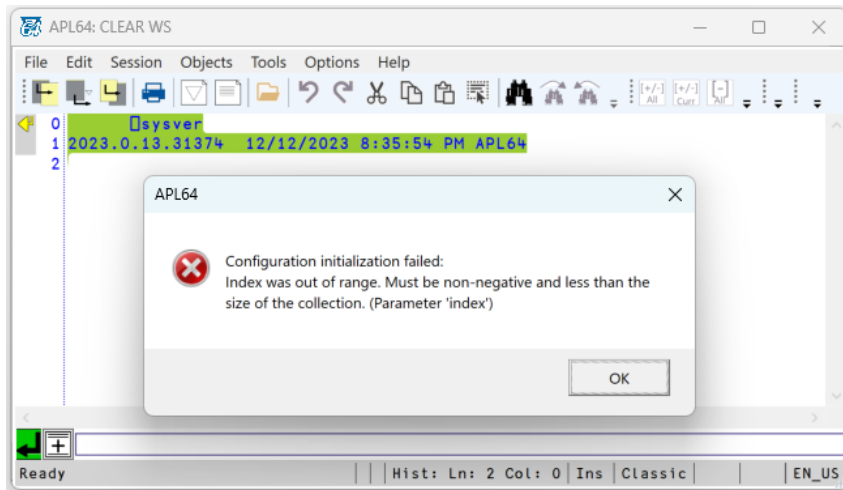
Case was retained for libs and)libs for mixed-case library definition

When a mixed-case library definition was created using the Libraries Definition dialog, the mixed-case was retained. The setting of the pathcase system variable dictates the display of the result of library numbers. The default setting for pathcase is 0 to be compatible with APL+Win, so that library definitions are returned in upper-case.

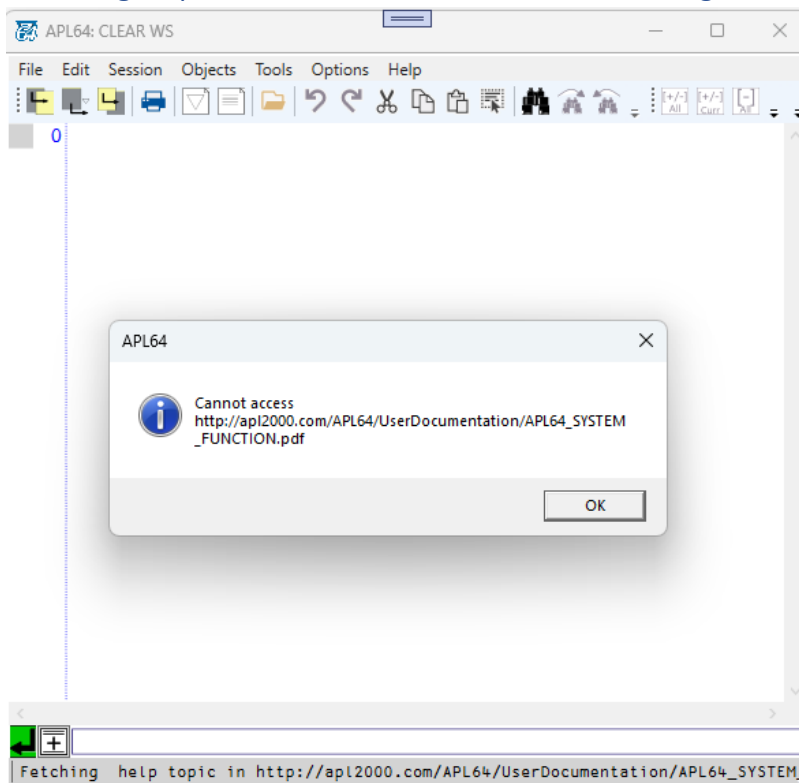
Extra space between library number and workspace name: WS NOT FOUND

When a library definition was created with extra space between the library number and workspace name, system commands such)LOAD,)COPY and)SAVE threw a WS NOT FOUND exception.

Ctrl+A then Ctrl+X in non-editable Classic Session History return an error



Accessing help file with no Internet connection: Configuration initialization failure exception



WRE (Windows Runtime Executable) failed to load APLNow.X64.dll in APL64 runtime system
This prevented primitive functions like indexing in APL statements from executing.

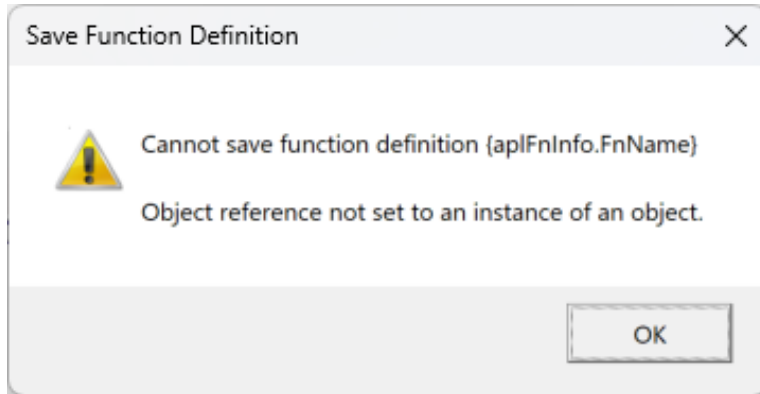
WRE Publish output log file contained messages referencing SpreadsheetGear

WRE crashed APL64 when creating a WRE without a valid entry in Runtime Workspace Filename

Empty array assigning caused INDEX ERROR

E.g., `Q←0 0ρ0 ◊ Q[;1]←θ`

Save a function (Ctrl+S) with auto indented spaces exception



Function editor exception with :IF and :ANDIF or :ORIF control structures

This occurred when an :IF statement with :ANDIF or :ORIF used in an incomplete control statement such as :A, :AN, :ANDI, :O, :ORI leading to unhandled exception being thrown.

`0 inbuf 'Default Value' ◊ X← deadlocked APL64`

Starting the Find in Functions in Workspace utility closed the APL64 instance

The APLGrid with xGripOptions=256 showed the dropdown list turn to black

This occurred when the vertical scroll bar in the list was scrolled and when APL64 was started with a manifest file.

Stepping in the debugger a line at a time (F10) didn't show the current line

This occurred when the line was below the bottom edge of the Debug pane.

Quote-quad input didn't complete its action when an empty response was user-entered

`EDSS description incorrectly specified in the APL64 system functions documentation`

The current)output state wasn't reset to ON after the)clear command

The current)output state wasn't saved in the workspace

Fetch Object operation in a function editor was not successful for a large numeric matrix

Debugger Pause toolbar did not suspend a function and activate the debugger

wi HELPSTRINGS.txt documentation was not included in APL64 production release